



TECHNICAL DATA SHEET

Item Code

LCPPW

Product

LAB COAT



Effective 12/2018

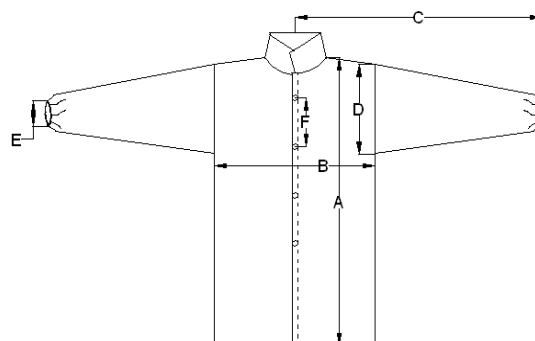
Base Material	Material	PP
	Colour	White
	Weight	25gsm

Description

4 snaps, elastic wrists, no pockets

Dimension of finished product (CM)

	S	M	L	XL	2XL	3XL	4XL	5XL	Tol.
A (overall length)	100	105	110	115	120	125	130	135	±3
B (chest width)	58	62	66	69	72	76	80	84	±2
C (sleeve length)	83	87	90	93	96	99	102	105	±2
D (sleeve width)	28	28	28	29	29	29	29	30	±2
E (sleeve opening)	9	9	9	9	9	9	9	9	±2
F (between snaps)	18	18	18	20	20	20	21	21	±1



Inner Packaging	Quantity	1pc/PE bag	
	Box/PE Bag	Material	
		Size(cm)	
		Vacuum	
Outer Packaging	Quantity	25 PE bags/Carton	
	Carton	Material	
		Colour	
		Size(cm)	S/M/L: 28x23x30cm;
			XL/2XL/3XL: 32x26x24cm
			4XL/5XL: 35x28x24cm

We believe the statements and information contained herein are accurate but are to be used only as general guidelines and are not warrants or guarantees because of the variety of possible uses THERE IS NO WARRANTY OF FITNESS FOR A PARTICULAR PURPOSE. THE BUYER MUST TEST THE SUITABILITY FOR EACH INTENDED APPLICATION BEFORE USING. WRAPTITE WILL NOT BE LIABLE FOR DAMAGES IN EXCESS OF THE PURCHASE PRICE OF ITS PRODUCTS OR FOR INCIDENTAL OR CONSEQUENTIAL DAMAGES.

Wrap Tite, Inc.

6200 Cochran Rd.

Solon, Ohio 44139

Toll Free: 888-972-7848 – Fax: 440-349-5432

www.wraptite.com – info@wraptite.com

