



TECHNICAL DATA SHEET

Item Code	LCMPW
Product	LAB COAT

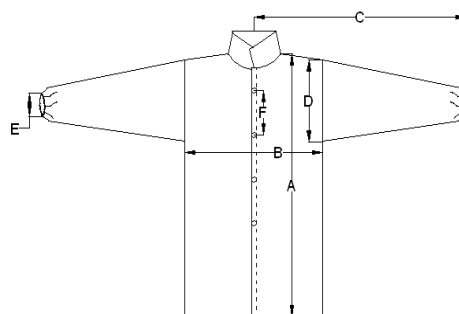


Effective 12/2018

Base Material	Material	Microporous
	Color	White
	Weight	50gsm

Description

4 snaps, elastic wrists, no pockets



Dimension of finished product (CM)

	S	M	L	XL	2XL	3XL	4XL	5XL	Tol.
A (overall length)	100	105	110	115	120	125	130	135	±3
B (chest width)	58	62	66	69	72	76	80	84	±2
C (sleeve length)	83	87	90	93	96	99	102	105	±2
D (sleeve width)	28	28	28	29	29	29	29	30	±2
E (sleeve opening)	9	9	9	9	9	9	9	9	±2
F (between snaps)	18	18	18	20	20	20	21	21	±1



Inner Packaging	Quantity	1pc/PE bag	
	Box/PE Bag	Material	
		Size(cm)	
Outer Packaging	Carton	Vacuum	
		Quantity	25 PE bags/Carton
		Material	
		Color	
		Size(cm)	S/M/L: 28x23x30cm: XL/2XL/3XL: 32x26x30cm 4XL/5XL: 35x28x30cm

We believe the statements and information contained herein are accurate but are to be used only as general guidelines and are not warrants or guarantees because of the variety of possible uses THERE IS NO WARRANTY OF FITNESS FOR A PARTICULAR PURPOSE. THE BUYER MUST TEST THE SUITABILITY FOR EACH INTENDED APPLICATION BEFORE USING. WRAPTITE WILL NOT BE LIABLE FOR DAMAGES IN EXCESS OF THE PURCHASE PRICE OF ITS PRODUCTS OR FOR INCIDENTAL OR CONSEQUENTIAL DAMAGES.

Wrap Tite, Inc.

6200 Cochran Rd.

Solon, Ohio 44139

Toll Free: 888-972-7848 – Fax: 440-349-5432

www.wraptite.com – info@wraptite.com

